

14 Jubilee Lane , Farnham, GU10 4SZ

Available with no onward chain, a detached 3 bedroom bungalow set within a secluded, elevated plot in a desirable location on the south side of Farnham town. The property has good sized rooms offering flexible accommodation and potential to modernise.

Price Guide £725,000

14 Jubilee Lane

, Farnham, GU10 4SZ



- Elevated position on a popular south Farnham lane
- Entrance lobby
- Dining hall
- Sitting room with large picture window with front view
- Kitchen/breakfast room
- 3 double bedrooms
- Bathroom and en suite cloakroom
- Detached double garage with ample driveway parking
- Front and rear garden
- No onward chain



[Directions](#)

Sat Nav: GU10 4SZ

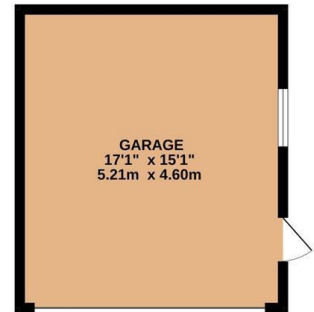
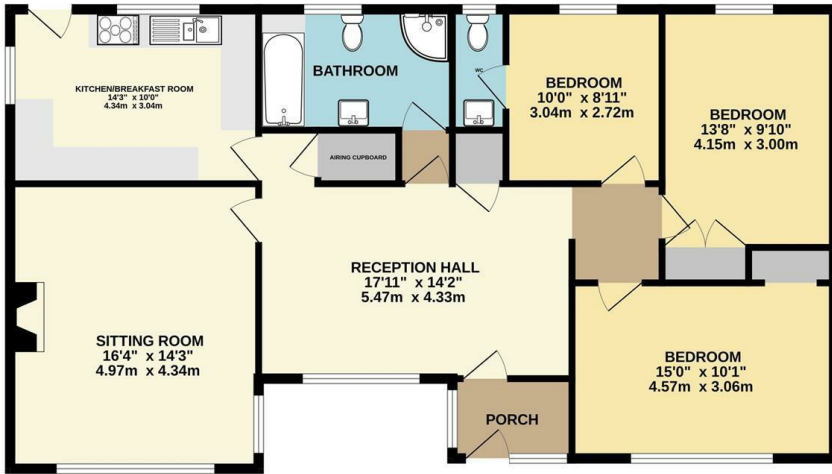




Floor Plan

GROUND FLOOR
1163 sq.ft. (108.1 sq.m.) approx.

GARAGE
258 sq.ft. (23.9 sq.m.) approx.



TOTAL FLOOR AREA: 1421 sq.ft. (132.0 sq.m.) approx.

Whilst every attempt has been made to ensure the accuracy of the floorplan contained here, measurements of doors, windows, rooms and any other items are approximate and no responsibility is taken for any error, omission or mis-statement. This plan is for illustrative purposes only and should be used as such by any prospective purchaser. The services, systems and appliances shown have not been tested and no guarantee as to their operability or efficiency can be given.
Made with Metropix ©2026



These particulars, whilst believed to be accurate are set out as a general outline only for guidance and do not constitute any part of an offer or contract. Intending purchasers should not rely on them as statements of representation of fact, but must satisfy themselves by inspection or otherwise as to their accuracy. No person in this firm's employment has the authority to make or give any representation or warranty in respect of the property.

